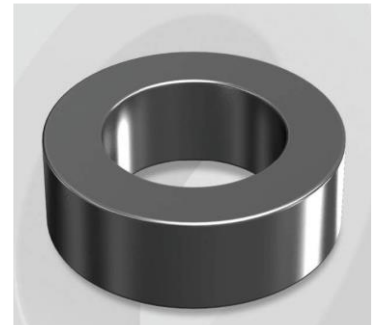


CK330060G

Electrical Characteristics

Material	Permeability (μ)	AL \pm 8% (nH/N ²)	DCB (% min) @ 100 Oe	Coreloss (mW/cm ² , max) @ 50kHz, 1000G
Mega Flux	60	61	59.8	710

OD : 330



Core Dimensions

Dimensions		Uncoated		Coated		Color	Packaging
		(mm)	(inch)	(mm)	(inch)		
OD	(Max)	33.02	1.300	33.83	1.332	Black	Box Qty = 240 pcs
ID	(min)	19.94	0.785	19.30	0.760		
HT	(max)	10.67	0.420	11.61	0.457		

Physical Characteristics

Cross Section (A)	Path Length (ℓ)	Window Area (Wa)	Volume (V)	Breakdown Voltage (Vac)
0.672 cm ²	8.15 cm	2.93 cm ²	5.476 cm ³	1,000
0.104 in ²	3.209 in	578,251 cmil	0.3341 in ³	

Winding Information

0% Winding length/turn (cm)		
3.775		
40% winding factor Surface Area (cm ²)		
49.01		
40% Wound Di.(mm)		
OD	ID	HT
38.69	12.64	17.37

Typical DC Bias Performance

